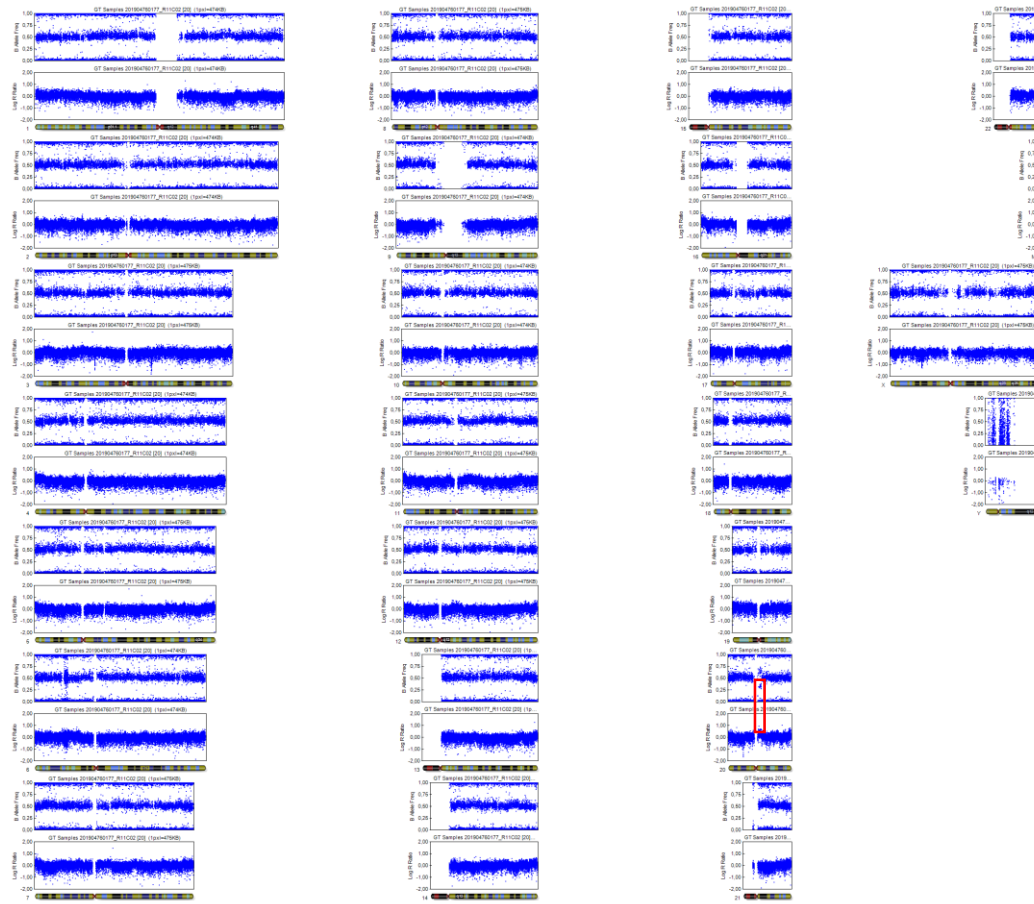
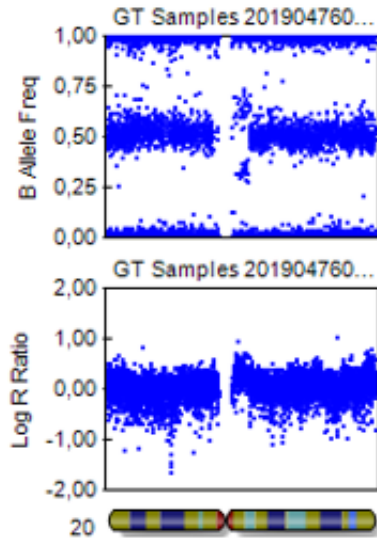


# STBCi006-A4 [WS3]: Overview



# STBCi006-A4 [WS3]: Chromosome 20



- Gain on chromosome 20q

- Approx. 2 MB
- 11.21 – 11.22 region

- Affected genes:

• ACSS2	• CCM2L	• GGT2	• PLAGL2
• AHCY	• CDK5RAP1	• HCK	• POFUT1
• ASIP	• CHMP4B	• HM13	• PXMP4
• ASXL1	• COMMD7	• ID1	• RALY
• BCL2L1	• COX4I2	• ITCH	• RALY-AS1
• BPIFA1	• DEFB116	• KIF3B	• REM1
• BPIFA2	• DEFB119	• LOC149950	• SNTA1
• BPIFA3	• DEFB122	• MACROD2	• SUN5
• BPIFA4P	• DEFB123	• MAP1LC3A	• TM9SF4
• BPIFB1	• DEFB124	• MAPRE1	• TPX2
• BPIFB2	• <b>DNMT3B</b>	• MYLK2	• TSPY26P
• BPIFB3	• DUSP15	• NCOA6	• TTLL9
• BPIFB4	• DYNLLRB1	• NECB3	• XKR7
• BPIFB6	• E2F1	• NOL4L	• ZNF341
• C20orf203	• EIF2S2	• PDRG1	• ZNF341-AS1
• CBFA2T2	• FRG1BP	• PIGU	

- Mutation is found in all isogenic lines