



# Certificate of analysis

SFC840-03-01

Operator: Jane Vowles

Date: 08/01/2015

Supervisor: Sally Cowley

Date: 22.04.2015

Signature:

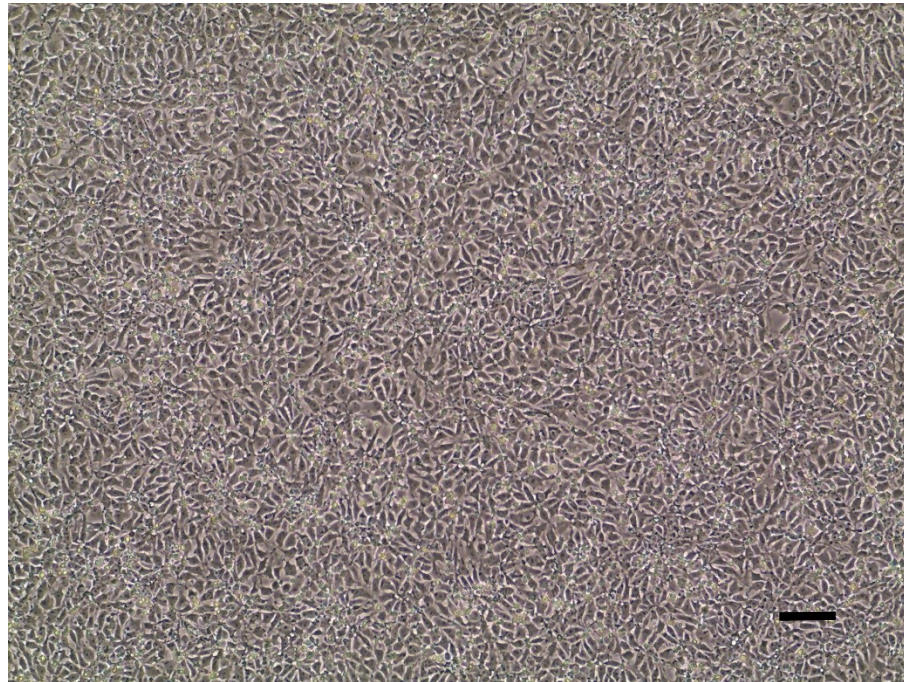
*SACowley*

# Source of fibroblasts and reprogramming information

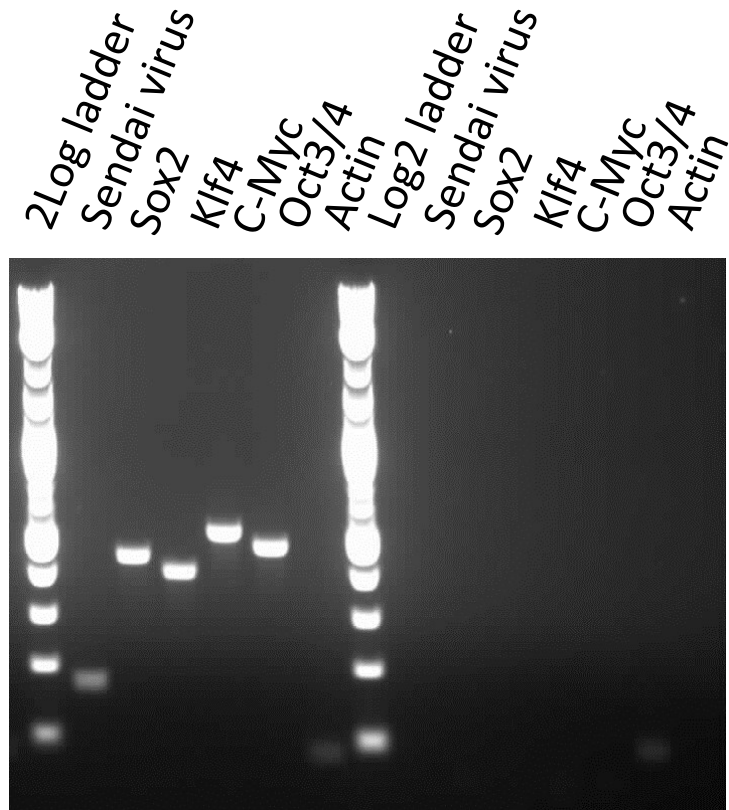
- SF840 from UOXF 04/04/2011
- Reprogrammed at UOXF JMSCF
- Reprogrammed on 13/12/2012 at passage no.5
- Cytotune v1 WP3 SOP10

# Viability post-thaw and Morphology according to SOP19 p19

- Cell count immediately post-thaw  $3.6 \times 10^6$
- Viability immediately post-thaw 80%
- Photo at 24h post-thaw (scale bar =  $100\mu\text{m}$ ):



# Sendai clearance: according to WP3 SOP15 undetectable at p19



+ control

**SFC840-03-01**

Product sizes: SeV 181bp; SeV-Sox 451bp; SeV-Klf 410bp; SeV-Myc 532bp; SeV-Oct 483bp; Actin 92bp

# Mycoplasma test:

## According to MycoAlert Lonza LT07-318 undetectable at passage p18

Sample	Clone	Passage number	Initial	Reading 1	Reading 2	Ratio/Status
+ve control				5.627	156.590	27.828
-ve control				7.262	0.671	0.092
10	SFC 840-03-01	p19	CB	2.768	1.187	0.429

Results mean

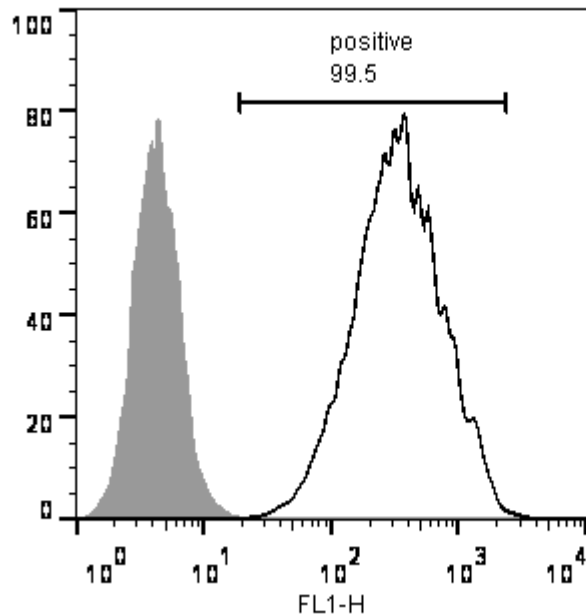
Ratio **0 - 0.999** negative for mycoplasma

Ratio **1 – 1.3** Borderline Result (retest required)

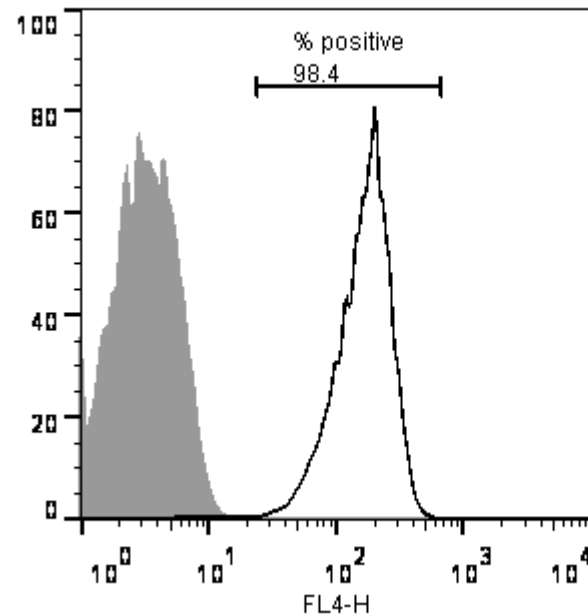
Ratio above **1.3** positive for mycoplasma

# Flow cytometric analysis according to WP3 SOP 20 and 21 passage p18

Tra-1-60



NANOG



# SNP analysis

according to WP3 SOP Preparation of DNA and RNA samples for Illumina arrays

- Passage 19
- Identity to parent fibroblasts confirmed
- Karyotype abnormalities: 8 small regions of change vs fibroblasts
- For details and raw data see StemDB